

LANDSCAPE SCHEDULE AND SPECIFICATION

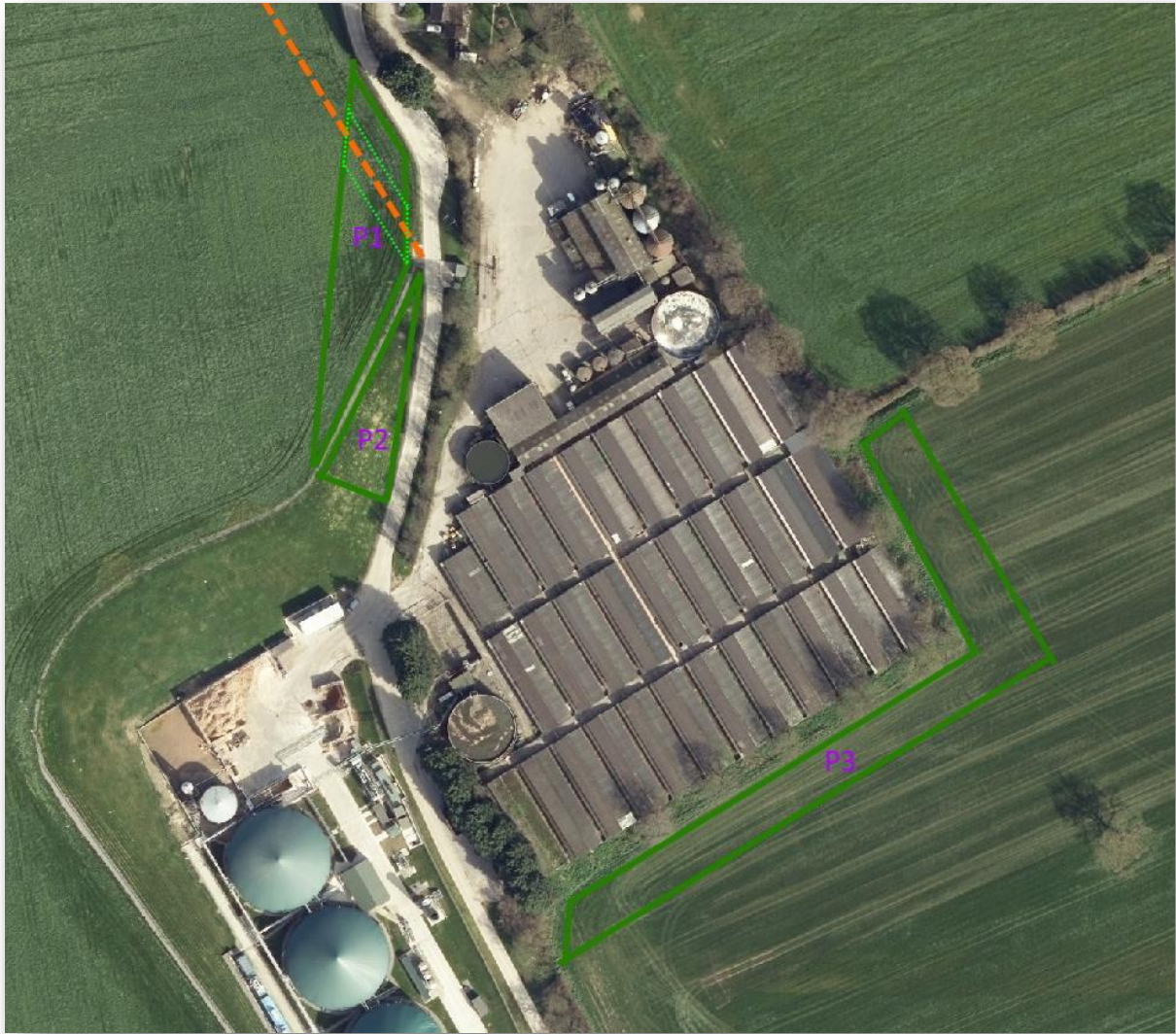
2020/0581/FUL

**Proposed Storage Buildings, Lambrook Pig Unit, Lamyatt, Bruton,
Somerset**



December 2020

Clark Landscape Design



Planning Permission 2020/0581/FUL

The following landscape schedule and specification has been prepared to meet the additional requirements of the Parish Council.

LAMBROOK STORAGE BUILDINGS – LANDSCAPE SCHEDULE

PLOT 1 (P1) 1100m²

Trees – 60-90cm bare root stock

Planted at 6m centres

- 8 *Acer campestre* (AC) - 25%
- 8 *Prunus avium* (PA) – 25%
- 3 *Carpinus betulus* (CB) – 10%
- 3 *Pinus sylvestris* (PS) – 10%
- 3 *Quercus robur* (QR) – 10%
- 3 *Sorbus torminalis* (ST) – 10%
- 3 *Tilia cordata* (TC) – 10%

Ian Clark, Landscape Architect, CMLI, Clark Landscape Design

Mobile: 07455 193875; Office: 01823 762446; email: clarkld@zoho.com 12 Whitehall, Taunton, TA1 1PG

Clark Landscape Design

Shrub Layer – 45-60cm bare root stock

Planted at 2m centres

- 24 Cornus sanguinea (CS) – 10%
- 72 Corylus avellana (CA) – 30%
- 72 Craetagus monogyna (CM) – 30%
- 24 Euonymus europeus (EE) – 10%
- 48 Ilex aquifolium (IA) – 20%

The area under the power lines will be planted with a shrub layer (30mx10m) that can either be coppiced on a regular basis or managed so that the plants don't interfere with the health and safety of the power lines.

PLOT 2 (P2) 480m²

Trees – 60-90cm bare root stock

Planted at 6m centres

- 5 Acer campestre (AC) - 25%
- 5 Prunus avium (PA) – 25%
- 2 Carpinus betulus (CB) – 10%
- 2 Pinus sylvestris (PS) – 10%
- 2 Quercus robur (QR) – 10%
- 2 Sorbus torminalis (ST) – 10%
- 2 Tilia cordata (TC) – 10%

Shrub Layer – 45-60cm bare root stock

Planted at 2m centres

- 10 Cornus sanguinea (CS) – 10%
- 30 Corylus avellana (CA) – 30%
- 30 Craetagus monogyna (CM) – 30%
- 10 Euonymus europeus (EE) – 10%
- 20 Ilex aquifolium (IA) – 20%

PLOT 3 (P3) 2760m²

Trees – 60-90cm bare root stock

Planted at 6m centres

- 28 Acer campestre (AC) - 25%
- 28 Prunus avium (PA) – 25%
- 12 Carpinus betulus (CB) – 10%
- 12 Pinus sylvestris (PS) – 10%
- 12 Quercus robur (QR) – 10%
- 12 Sorbus torminalis (ST) – 10%
- 12 Tilia cordata (TC) – 10%

Shrub Layer – 45-60cm bare root stock

Planted at 2m centres

- 58 Cornus sanguinea (CS) – 10%
- 174 Corylus avellana (CA) – 30%
- 174 Craetagus monogyna (CM) – 30%
- 58 Euonymus europeus (EE) – 10%
- 116 Ilex aquifolium (IA) – 20%

Ian Clark, Landscape Architect, CMLI, Clark Landscape Design

Mobile: 07455 193875; Office: 01823 762446; email: clarkld@zoho.com 12 Whitehall, Taunton, TA1 1PG

LAMBROOK STORAGE BUILDINGS - LANDSCAPE SPECIFICATION

General landscape specification

The following planting will be carried out in accordance with:

BS8545:2014 – Trees: from nursery to independence in the landscape

BS4428:1989 – Code of practice for general landscape operations (excluding hard surfaces)

BS3936-4:2007 – Nursery stock (specification for forest trees, poplars and willows)

Herbicides should be applied strictly in accordance with the manufacturer's instructions and the Food and Environment Protection Act 1985.

It will be the responsibility of the developer to design foundations to accommodate all proposed and existing tree and shrub planting, with reference made to NHBC Standards, Parts 4.2, 2011 (*Building near Trees*).

The developer should satisfy themselves that all trees are a safe distance from drainage runs and services and that no planting falls within service strips.

The landscape contractors shall make themselves aware of all service locations prior to commencing planting operations.

Where any deviation from this specification occurs within a scheme, the contractor shall request the relevant detail from the designer prior to proceeding.

Existing Vegetation

All trees and hedges which are shown for retention should be inspected for safety by a suitably qualified arboriculturalist. They should be protected during all phases of construction with temporary fencing in accordance with BS5837 2012 and must comply with all applicable planning conditions. Any tree surgery required shall also be in accordance with BS 3998:2010.

The landscape contractor shall make the Contract Administer (CA) aware of any notifiable weeds on site.

Plant Stock

All plant material to be as specified in the Plant Schedule, and available for inspection by the Landscape Architect.

All plant material to be in accordance with BS8545:2014 – Trees: from nursery to independence in the landscape; BS3969 1998 'Recommendations for Turf for General Purpose' and 'Handling and Establishing Landscape Plants' HTA 1985, revised edition March 2002.

Any stock planted outside the recognised planting season to be containerised. Containerised plant stock to have fully developed root system within the specified pot size. Where growing on in the nursery is necessary all plant material is to be re-potted to the next approved pot size, re-spaced to allow for 15-20% growth per growing season, and maintained to healthy vigorous growth irrespective of weather conditions.

Planting Specification - Proposed Trees and Hedges

All planting areas to be weed free prior to planting. Allow for spot application of approved translocated systemic herbicide in line with 1997 *Control of Pesticide Regulations* and 2003 COSHH.

Ian Clark, Landscape Architect, CMLI, Clark Landscape Design

Mobile: 07455 193875; Office: 01823 762446; email: clarkld@zoho.com 12 Whitehall, Taunton, TA1 1PG

Clark Landscape Design

Tree and Shrub Planting

Trees and shrubs to be notch planted. Work to be in accordance with BS4043:1989. All trees to be checked regularly for the duration of the 12 Month Maintenance Period.

Tree Shelters Tree and shrub shelters, suitable for deer protection, shall be used for all tree and shrub material and shall be Tubex Shelterguard Tree Tubes and Tubex Shrubshelters or similar approved. Shelters shall be carefully placed over the top of young trees and secured to a supporting stake, using the manufacturers fixing equipment and to the manufacturer's recommendations.

Year one maintenance

Regular visits shall be made for twelve months following practical completion, to maintain all planted areas in a weed and litter free condition. Minimum number of visits to be:-

- Tree and shrub areas min. 6 visits per annum

Maintenance visits to include watering, pruning, pest/disease control, litter removal, checking tree stakes as required.

Please refer to the **Plant Schedules** above for details of species.

Maintenance and management for the first five years

Any plants that are found dying or dead within the first five years after planting will be replaced like for like.

During the first two growing season any weed growth will be spot controlled with glyphosate three times during the growing season in April, June and September.

Hedgerow plants will be lightly side and top pruned to encourage bushy growth.

Trees will be formatively pruned annually to remove crossing, diseased and broken branches. After two years it should be possible to remove the short stakes subject to good establishment of root stock.

After two years the trees and hedgerows should be well established and no longer require any spray treatment and can be hand weeded where required.